

Wednesday, March 11, 2009  
259<sup>th</sup> Cobra flight, 268<sup>th</sup> PIC, 4 landings  
Low Voltage test flight, Pools

Takeoff: 11:41 am      Landing: 1:03 pm  
Today's Airtime: 1.3  
Total PIC Time : 661.3    Total Logged Time 682.5



Last Sunday I took a couple hour flight over the Manzanos and near the end of the flight saw my voltage had dropped to 8.1V. Not good. So I came out to the hangar today to deal with this problem.

The left early, and arrived at Belen around 8am. The winds were calm, and conditions perfect for flying but I worked on my trike instead.

The main thing I did was move my voltage indicator to a prominent place on the instrument panel. It was under my leg up front, not visible in flight. I originally installed it so I would know how my voltage battery before starting the engine.

I also rearranged the wiring on my radio and transponder again. I was done at 10am and wanted to take a short test flight but the winds started to pick up. My battery was low, so I put it on the charger, then started up the engine and check the electrical system some more. By the time I was satisfied, the winds were blowing around 10-12mph. I stopped the engine, pushed the trike in the hangar and got ready to leave. Then the winds died. The trike came out of the hangar and I got ready to fly.

I didn't plan to fly far. I had my video camera set up, and running off the power inverter I had plugged into the cigarette lighter. I headed out to the pools, hoping I could get some nice video here.

I looked at my voltage indicator and saw it below 11V and slowly going down.

This was not right. I turned off the strobes and saw the voltage shift up a half a volt. Then I unplugged the power inverter and saw the voltage jump up to 13.0 volts.

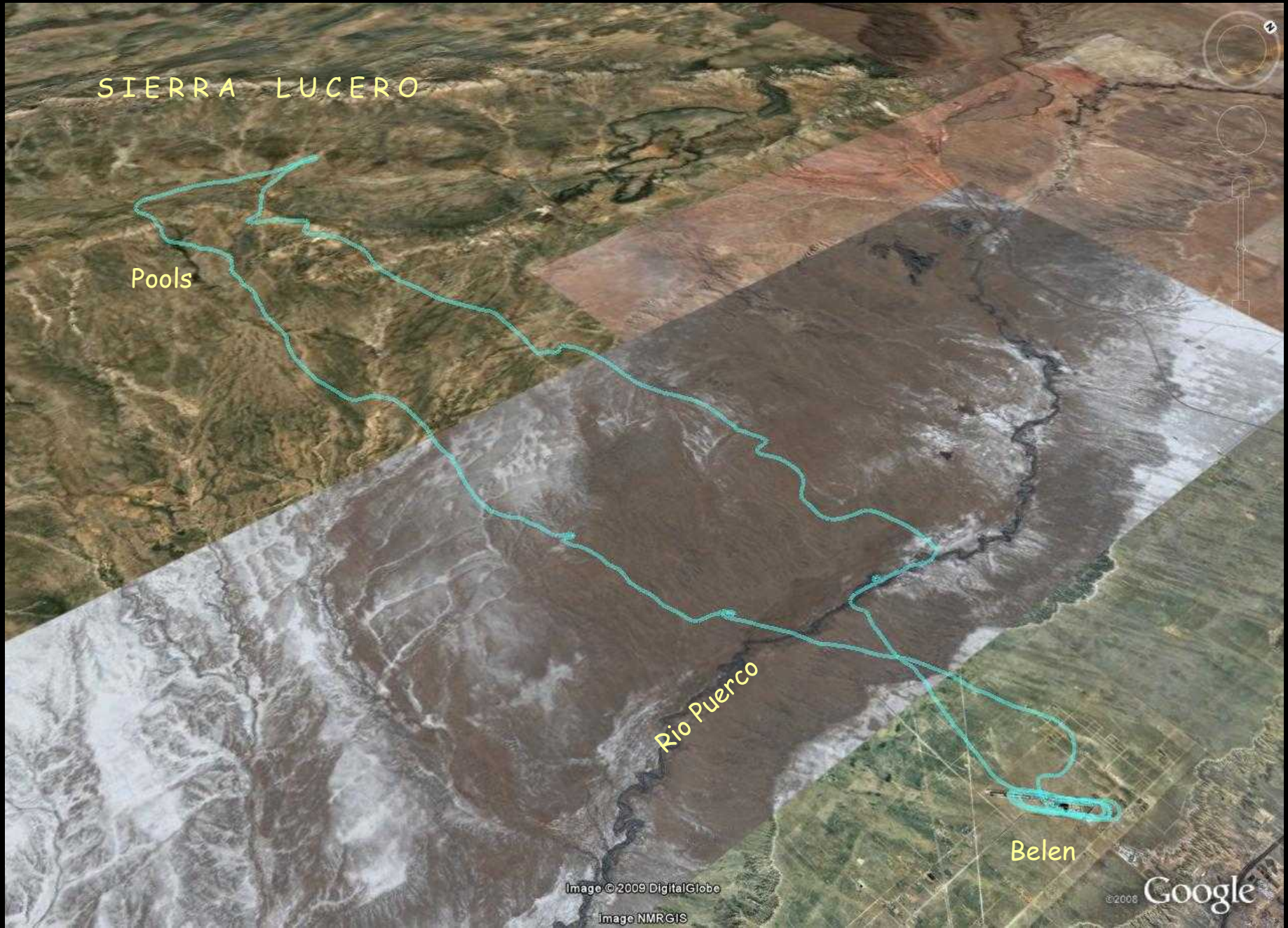


I think that was my problem on the last flight. And I recalled that my battery problems started when I started using the inverter to charge up the video camera last fall.

Out here, it was blowing out of the NW around 20mph. I was feeling the rotor coming of the Sierra Lucero 5 or 6 miles away. I turned back, flying past the deep pool.

I headed back for the airport. When I landed, it was 12mph, dead cross, but I used power for a stabilized approach and made a nice and easy landing.

Here is my GPS track.



SIERRA LUCERO

Pools

Rio Puerco

Belen

Image © 2009 DigitalGlobe

Image NMRGIS

© 2008

Google